

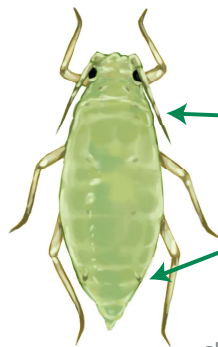
Russian wheat aphid and the summer green bridge

GRDC Investment 9176535

Researchers from SARDI and **cesar** are working to understand what conditions allow Russian wheat aphid (RWA) to persist over the summer, as well as the role of grasses and volunteer cereals, and how this green bridge influences the risk of RWA when crops emerge. These activities are being conducted as a part of the GRDC investment 'Russian wheat aphid risk assessment and regional thresholds', which will run until June 2020.



symptoms of Russian wheat aphid

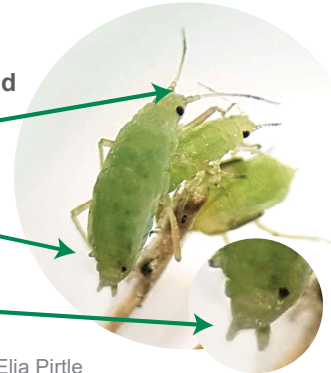


how to identify a Russian wheat aphid

short antennae

'exhaust pipes' very small

double tail



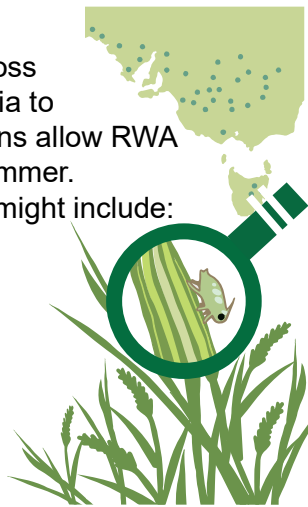
all photos and illustrations by Elia Pirtle

How to beat the green bridge?

We are looking for RWA at 110 sites across south-eastern Australia to find out what conditions allow RWA to persist over the summer.

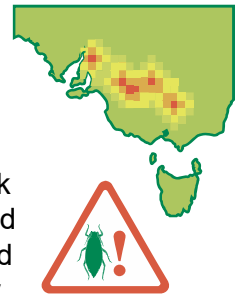
Important conditions might include:

- local climate
- water availability
- host plants
- land usage
- beneficials



We will arm growers with a better understanding of how the summer green bridge contributes to RWA risk, so that they can make proactive control decisions. Our outputs will include:

- an overview of summer risk and best management practices
- a real-time RWA risk prediction tool based on weather data and moisture availability



Results will be used to update the GRDC RWA Tips & Tactics guide. Learn more about this investment and stay informed about RWA at the project portal:

cesaraustralia.com/sustainable-agriculture/rwa-portal



If you have any questions about our project, or about Russian wheat aphid, please get in touch with:

Dr. Jessica Lye, **cesar**
03 9349 4723

jlye@cesaraustralia.com

cesaraustralia.com/sustainable-agriculture/rwa-portal



sustainability through science and innovation



This research initiative is a GRDC investment that seeks to deliver information on Russian Wheat Aphid management for grain growers. This project is being undertaken by the South Australian Research & Development Institute (SARDI) and cesar